



Infochroma & GTG Vials



infochroma.ch
gtgvials.eu
chemoline.ch



InfoGTG Compact

Vials and closures from own production

Imprint

infoGTG Compact | Issue 2021

Product brochure of infochroma ag and
Glastechnik Gräfenroda GmbH.

Swiss branch

infochroma ag
Chräbelstrasse 4
CH-6410 Goldau

phone +41 41 748 50 60
info@infochroma.ch
www.infochroma.ch

Managing director

Alice Baumli

Sales Switzerland

Charles Burkard
charles.burkard@infochroma.ch

German branch

Glastechnik Gräfenroda GmbH
Wiesenweg 35
D-9930 Gräfenroda

phone +49 36205 77 229
verkauf@gtgvials.de
www.gtgvials.eu

Managing directors

Eberhard Fischer
Friedrich Fischer

Sales international

Hannes Baumli
hannes.baumli@infochroma.ch

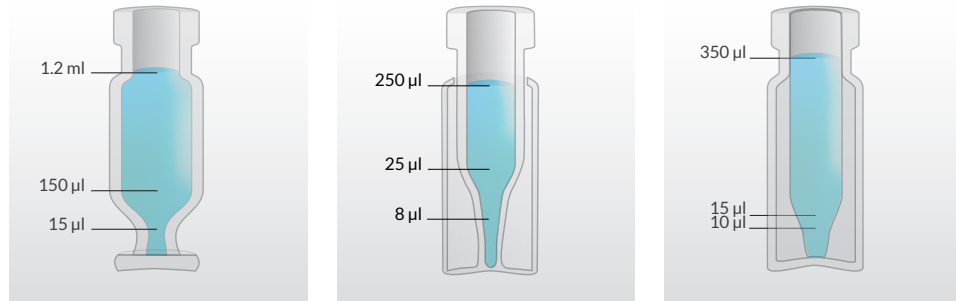
All information without guarantee.
No texts or images may be copied and used further unless expressly permitted by infochroma ag.

Index

Imprint	2
12 × 32 mm vials for optimized microsampling	4
ms-Pure - Non-pigmented septum	6
NEW ZeroSept® - Phthalate free septum	7
NEW blueLine - Standard vials & caps	8
Sterile and depyrogenated vials & closures from the clean room	9
Headspace crimp vials & caps	10
Headspace screw vials, caps and septa	11
Lyophilisation vials, caps and stoppers	12
Production at Glastechnik Gräfenroda - GTG	14
Special purpose vials: VMax, NEW iTri & NEW nG Nano by GTG	15
Storage Vials from 1.0 - 60 ml with PTFE lined closed-top screw cap	18
Storage vials for the long-term storage of volatile samples	20
Sample bottles from 6 - 2500 ml	21
NEW Pyrex® "Heavy Duty" glassware	22
"YETI" Syringe filters	26
Polypropylene syringes	27
HALO® Fused-Core columns	28
NEW Storage system for HPLC or GC columns	29
NEW Deuterium detector lamps	29
NEW Migration cells	30
Salli saddle chairs	31
Our partners worldwide	32

12 × 32 mm vials for optimized microsampling

Our vials for small sample volumes produced by GTG, Germany (read more on page 14).
Made from borosilicate glass 1. hydrolytic class, clear (H) or amber (D)



Vµ-Vial

1.2 ml volume,
for small and large sample
volumes

iV2µ-Vial

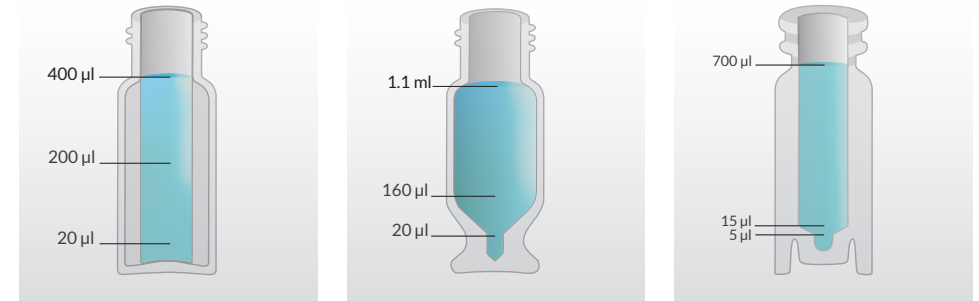
250 µl volume,
insert itself closed with cap,
long, narrow tapered insert

µ-Vial

350 µl volume,
tapered insert,
robust all-in-one design

Closure type	Vµ-Vial	iV2µ-Vial	µ-Vial
Crimp (ND11)	8002-CV-H/V15µ 8002-CV-D/V15µ	8002-CV-H/iV2µ 8002-CV-D/iV2µ	8002-CV-H/i3µ 8002-CV-D/i3µ
Snap/Crimp (ND11)	8002-SC-H/V15µ 8002-SC-D/V15µ	8002-SC-H/iV2µ 8002-SC-D/iV2µ	8002-SC-H/i3µ 8002-SC-D/i3µ
Agilent compatible (ND9)	8004-HP-H/V15µ 8004-HP-D/V15µ	8004-HP-H/iV2µ 8004-HP-D/iV2µ	8004-HP-H/i3µ 8004-HP-D/i3µ
Narrow Mouth (ND8)	8004-NM-H/V15µ 8004-NM-D/V15µ		
Wide Mouth (ND10)	8004-WM-H/V15µ 8004-WM-D/V15µ		8004-WM-H/i3µ 8004-WM-D/i3µ

Made from borosilicate glass 1. hydrolytic class,
clear (H) or amber (D)



i4µ-Vial

400 µl volume,
flat bottom insert,
robust all-in-one design,
amber glass only

iK11µ-Vial

1.1 ml volume,
very small dead volume,
clear glass only

pp-Pure-Vial

100 µl - 700 µl volume,
made from very pure
polypropylene, Snap/Crimp
vial may also be used with
crimp caps

Closure type	i4µ-Vial	iK11µ-Vial	pp-Pure-Vial
Crimp (ND11)	8002-CV-H/i4µ 8002-CV-D/i4µ	G002-CV-H/iK11µ G002-CV-D/iK11µ	
Snap/Crimp (ND11)	8002-SC-H/i4µ 8002-SC-D/i4µ	G002-SC-H/iK11µ G002-SC-D/iK11µ	G002-SC-PP/i17µ
Agilent compatible (ND9)	8004-HP-H/i4µ 8004-HP-D/i4µ	G004-HP-H/iK11µ G004-HP-D/iK11µ	G004-HP-PP/i17µ
Narrow Mouth (ND8)			
Wide Mouth (ND10)			

ms-Pure - non-pigmented silicone/PTFE septum

With the increasing sensitivity of the analytical instruments, extractable substances from the septum may distort the analysis result. The ms-Pure silicone/PTFE septum is produced from a natural non-pigmented silicone/PTFE. Tests show that it is 60 % cleaner than "standard" silicone/PTFE septums on the market.

- non-pigmented silicone of highest quality
- low bleeding
- resists coring
- excellent resealing ability
- intended for multiple injections
- low compression set for storage reliability



This septum is available for all closure types of autosampler and headspace vials (see pp 10 & 11)

Closure type	Silicone/PTFE	Silicone/PTFE pre-slit	PTFE/silicone/PTFE
Crimp (CV)	G003-AC*-SKFK10	G003-AC*-Hi-SKFK10	G003-AC*-FKSKFK10
Snap/Crimp (SC)	G003-SC*-SKFK10	G003-SC*-Hi-SKFK10	G003-SC*-FKSKFK10
Agilent compatible (HP)	G004-HP-C*-SKFK10	G004-HP-C*-Hi-SKFK10	G004-HP-C*-FKSKFK10
Narrow Mouth (NM)	G004-NM-C*-SKFK10	G004-NM-C*-Hi-SKFK10	G004-NM-C*-FKSKFK10
Wide Mouth (WM)	G004-WM-CS-SKFK10	G004-WM-CS-Hi-SKFK10	G004-WM-CS-FKSKFK10

replace «*» with the cap colour of your choice.
availability depending on closure type:

CV, SC	SC, HP, NM	CV	CV, SC, HP, NM	NM, WM	NM	NM
C = clear	B = blue	G = green	R = red	S = black	W = white	Y = yellow

ZeroSept® - phthalate-free septum

- for trace and migration analysis
- for liquid-liquid extractions
- phthalate, elastomer, silicone and halogen free



ZeroSept® AIR

The ZeroSept® AIR septum seals due to an air cushion sandwiched between two thin layers of high-purity PTFE foil. When coring a silicone or rubber septum with the needle, some septum material may be extracted into the sample. The ZeroSept® AIR septum eliminates the risk of interfering peaks as a result of coring material. Even when used for multiple injections, the ZeroSept® AIR septum seals adequately over a period of 24 hours as tests have shown.

Neck Ø	Description	Part number
11 mm	Aluminium crimp cap • Septum: PTFE foil/fluoroplastic O-ring/PTFE foil, sealing due to air cushion, multiple injection possible	GC03-AC*-FWAFW01
20 mm	Aluminium crimp cap • Septum: PTFE foil/fluoroplastic O-ring/PTFE foil, sealing due to air cushion, multiple injection possible	GC07-AC*-FWAFW01
20 mm	Aluminium crimp cap blue, with magnetic stainless steel ring • Septum: PTFE foil/fluoroplastic O-ring/PTFE foil, sealing due to air cushion, multiple injection possible	GC07-MACB-FWAFW01

ZeroSept® Septum with O-ring and aluminium- or PTFE foil

The O-ring has the same thickness as a common septum. It assures the optimal resting of the septum on the vial head. It also reduces the need to completely reset the crimper.

Neck Ø	Description	Part number
11 mm	ALUmono-O: Aluminium crimp cap • Septum: fluoroplastic O-ring/aluminium foil	GC03-ACC-FOAL01
11 mm	PTFEmono-O: Aluminium crimp cap • Septum: fluoroplastic O-ring/PTFE foil	GC03-ACC-FOFW01
11 mm	ALUmono: Aluminium crimp cap • Septum: aluminium foil	G003-ACZ-AL01
11 mm	PTFEmono: Aluminium crimp cap • Septum: PTFE foil	G003-ACZ-FW03

blueLine - Standard vials & caps

1.5 ml Standard vials & caps, as they are used for routine analysis, should be available at a favourable price. Despite the favourable price, a good quality of vials and caps is required for a smooth work flow. Our blueLine vials and caps fulfill these requirements.

Our blueLine vials are made from borosilicate glass 1. hydrolytic class, clear (H) or amber (D)



Crimp vial

Snap/Crimp vial

Agilent compatible vial

Closure type	Vials	Caps with silicone/ PTFE septum	Caps with butylrubber/ PTFE septum
Crimp (ND11)	BL02-CV-H BL02-CV-D	BL03-ACC-SWFR10	BL03-AC*-RBF10
Snap/Crimp (ND11)	BL02-SC-H BL02-SC-D	BL03-SCB-SWFR10 BL03-SCB-Hi-SWFR10	
Agilent compatible (ND9)	BL04-HP-H BL04-HP-D	BL04-HP-CB-SWFR10 BL04-HP-CB-Hi-SWFR10	

replace «*» with the cap colour of your choice.

C = clear

B = blue

Sterile and depyrogenated vials & closures from the clean room



In our in-house clean room, we wash, sterilise and depyrogenise vials, bottles and closures according to customer specifications.

Available processes

- Purified water rinse (de-ionised / de-mineralised water)
- Packing in low-particle environment
- Hot air sterilisation
- Hot-air depyrogenation
- E-Beam sterilisation in co-operation with contract partners
- Individual pack sizes
- Individual combination of products per unit
- Production of small or large quantities

Quality control

- Validated process
- Skilled staff
- IQ/OQ - equipment qualification, rotative PQ
- Visual inspection for visual defects of 100 % of the finished products
- Analysis for sterility and BET test (bacterial endotoxin-test) carried out by an independent microbiology laboratory
- Detection limit BET: <0.001 EU/ml

Headspace crimp vials & caps

Our Headspace vials are made from borosilicate glass,
1. hydrolytic class, clear (H) or amber (D)

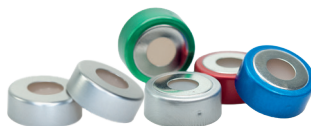


Headspace crimp vials

Volume	Dimensions Ø x h	Neck Ø	Part number
10 ml	23 x 45 mm	20 mm	G006-10-H/FI G006-10-D/FI
10 ml	23 x 45 mm	20 mm	G006-10-H/Ru
20 ml	23 x 75 mm	20 mm	G006-20-H/FI G006-20-D/FI
20 ml	23 x 75 mm	20 mm	G006-20-H/Ru G006-20-D/Ru

Headspace crimp caps and septa

Aluminium caps with or without magnetic steel ring with non-pigmented ms-Pure silicone/PTFE septum or ZeroSept® AIR septum and polyethylene snap caps for wash vials. (see pp. 6-7 for more information).



Neck Ø	Description	Part number
20 mm	Aluminium crimp cap with magnetic steel ring • ms-Pure septum: 3.2 mm thick, clear silicone/PTFE, 40 ± 5° Shore A	G007-MAC*-SKFK30
20 mm	Aluminum crimp cap, clear (C) or red (R) • ms-Pure septum 3.2 mm thick, clear silicone/PTFE, 40 ± 5° Shore A	G007-ACC-SKFK30 G007-ACR-SKFK30
20 mm	Aluminium crimp cap, blue, with magnetic steel ring • ZeroSept® AIR septum: PTFE foil/fluoroplastic O-ring/PTFE foil, phthalate-free, multiple injection possible	GC07-MACB-FWAFW01
20 mm	Polyethylene snap cap, white • Septum 1.5 mm thick, white-blue silicone/PTFE	8007-WKS1

replace «*» with the cap colour of your choice.



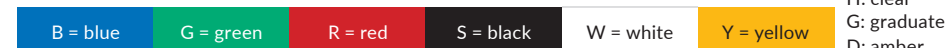
Headspace screw vials & caps and septa

Headspace vials with fibreglass reinforced polyamide screw caps. Cap screws on easily, a torque of <1 Nm only is required for a pressure-tight seal (usually > 8 Nm). A magnetic steel ring inserted into the cap allows the use on Headspace samplers with magnetic arm.



Volume	Description	Part number
10 ml	Screw vial, borosilicate glass, 1. hydrolytic class • magnetic screw cap • 3 mm white-red silicone/PTFE septum, 40 ± 5° Shore A, can be used up to 150 ° C	GHS6*-10R-SWFR31-H GHS6*-10R-SWFR31-D
10 ml	Screw vial, borosilicate glass, 1. hydrolytic class • magnetic screw cap • 1.5 mm white-red silicone/PTFE septum, 40 ± 5° Shore A, can be used up to 150 ° C	GHS6*-10R-SWFR16-H GHS6*-10R-SWFR16-D
10 ml	Screw vial, borosilicate glass, 1. hydrolytic class • magnetic screw cap • 3 mm clear-white silicone/PTFE septum, 40 ± 5° Shore A, can be used up to 150 ° C	GHS6*-10R-SKFW32-H GHS6*-10R-SKFW32-D
10 ml	Screw vial, borosilicate glass, 1. hydrolytic class • magnetic screw cap • 3 mm blue-grey silicone/PTFE septum, 40 ± 5° Shore A, can be used up to 150 ° C	GHS6*-10R-SBFZ31-H GHS6*-10R-SBFZ31-D
10 ml	Screw vial, borosilicate glass, 1. hydrolytic class • magnetic screw cap • 3 mm grey butyl/PTFE septum, 50 ± 5° Shore-A, can be used up to 125 ° C	GHS6*-10R-BZFZ31-H GHS6*-10R-BZFZ31-D
20 ml	Screw vial, borosilicate glass, 1. hydrolytic class • magnetic screw cap • 3 mm white-red silicone/PTFE septum, 40 ± 5° Shore A, can be used up to 150 ° C	GHS6*-20R-SWFR31-H GHS6*-20R-SWFR31-D GHS6*-20R-SWFR31-H/G
20 ml	Screw vial, borosilicate glass, 1. hydrolytic class • magnetic screw cap • 1.5 mm white-red silicone/PTFE septum, 40 ± 5° Shore A, can be used up to 150 ° C	GHS6*-20R-SWFR16-H GHS6*-20R-SWFR16-D GHS6*-20R-SWFR16-H/G
20 ml	Screw vial, borosilicate glass, 1. hydrolytic class • magnetic screw cap • 3 mm clear-white silicone/PTFE septum, 40 ± 5° Shore A, can be used up to 150 ° C	GHS6*-20R-SKFW32-H GHS6*-20R-SKFW32-D GHS6*-20R-SKFW32-H/G
20 ml	Screw vial, borosilicate glass, 1. hydrolytic class • magnetic screw cap • 3 mm blue-grey silicone/PTFE septum, 40 ± 5° Shore A, can be used up to 150 ° C	GHS6*-20R-SBFZ31-H GHS6*-20R-SBFZ31-D GHS6*-20R-SBFZ31-H/G
20 ml	Screw vial, borosilicate glass, 1. hydrolytic class • magnetic screw cap • 3 mm grey butyl/PTFE septum, 50 ± 5° Shore-A, can be used up to 125 ° C	GHS6*-20R-BZFZ31-H GHS6*-20R-BZFZ31-D GHS6*-20R-BZFZ31-H/G

replace «*» with the cap colour of your choice.



glass
H: clear
G: graduated
D: amber

Lyophilisation: vials, caps and stoppers

Screw vials

GL14 & GL22 thread

Crimp vials

13 mm & 20 mm crimp neck

in clear (H) and/or amber (D)
borosilicate glass, autoclavable



Screw vials

Volume	Dimensions Ø x h	Screw thread	Part number
3 ml	18 x 36 mm	GL14	8084-03-H 8084-03-D
5 ml	18 x 41 mm	GL14	8084-05-H 8084-05-D
10 ml	25 x 50 mm	GL22	8084-10-H 8084-10-D
20 ml	28 x 63 mm	GL22	8084-20-H 8084-20-D
25 ml	32 x 63 mm	GL22	8084-25-H 8084-25-D

Screw caps & stoppers

Thread/Ø	Description	Part number
GL14	Autoclavable polypropylene screw cap, white	8084-CW-Lio
GL14	Polyethylene lined screw cap, white	8084-CW-PP
14 mm	Lyophilisation stopper, gray butyl rubber, iglu	8084-Lio
GL22	Autoclavable polypropylene screw cap, white	8084-CW/22-Lio
GL22	Autoclavable polypropylene screw cap, red	8084-CR/22-Lio
GL22	Polyethylene lined screw cap, white	8084-CW/22-PP
20 mm	Lyophilisation stopper, gray butyl rubber, 4 leg	

Crimp vials

Volume	Dimensions Ø x h	Neck Ø	Part number
2 ml	15 x 33 mm	13 mm	8082-15/033-H
3 ml	16 x 35 mm	13 mm	8082-16/035-H 8082-16/035-D
3 ml	15 x 37 mm	13 mm	8082-15/037-H
5 ml	16 x 50 mm	13 mm	8082-16/050-D
6 ml	22 x 40 mm	20 mm	8086-22/040-H 8086-22/040-H
10 ml	23 x 46 mm	20 mm	G006-10-H/FL G006-10-D/FL
20 ml	30 x 55 mm	20 mm	8086-30/055-H* 8086-30/055-D*
30 ml	36 x 62 mm	20 mm	8086-36/062-H*
50 ml	43 x 73 mm	20 mm	8086-43/073-H* 8086-43/073-D*
100 ml	52 x 95 mm	20 mm	8086-52/095-H* 8086-52/095-D*

Vials marked with «*» are made from moulded glass.

Crimp caps & stoppers

Neck Ø	Description	Part number
13 mm	Aluminium crimp cap, complete tear off	8083-TO
13 mm	Lyophilisation stopper, grey butyl rubber, iglu	8083-Lio
13 mm	Injection stopper, grey butyl rubber	8083-Bu
20 mm	Aluminium crimp cap, complete tear off	8087-TO
20 mm	Aluminium crimp cap, centre tear off	8087-MA
20 mm	Flip-off® crimp caps, 15 colours	8087-FO*
20 mm	Lyophilisation stopper, grey butyl rubber 4-leg	8087-Lio
20 mm	Lyophilisation stopper, grey butyl rubber, 2-leg	8087-Lio2
20 mm	Injection stopper, grey butyl rubber	8087-Bu
20 mm	Injection stopper, grey butyl rubber/PTFE	8087-Bu/Te
20 mm	Injection stopper, clear silicone	8087-Si

* The full colour selection cannot be listed on this page. Please contact our team or your dealer for further information.

Production at Glastechnik Gräfenroda - GTG

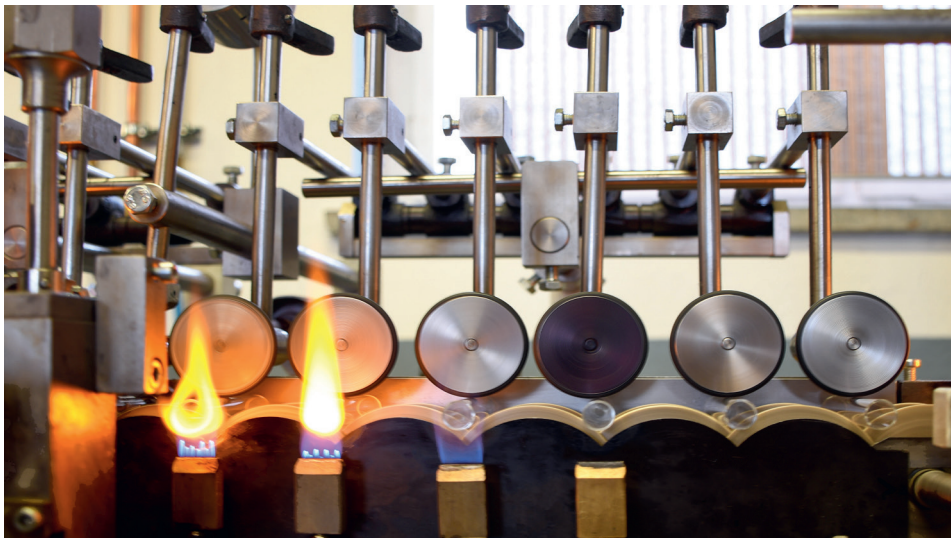
Glass products "Made in Germany"

Our partner company Glastechnik Gräfenroda GmbH is located in the traditional glass manufacturing area of Thuringia. Together we develop and produce innovative, high-quality glass products for chromatography as well as pharmaceutical and industrial applications. These we distribute at home as well as internationally.



We produce **autosampler vials for optimised microsampling** with the standard 12 x 32 mm dimensions such as our iV2 μ -Vial. This is a 250 μ l insert vial where the insert itself is closed by the cap. It is, so to speak, the „little brother“ of our 1.2 ml iV2 μ -Vial, which has the shape of a small vase. Both products were developed in-house and are patented. (see pp. 4 & 5)

We are also your **competent partner for custom-made products from tubular glass**. Qualified glassblowers and machine engineers, combined with much experience and know-how, allow us to develop together with you a new product from your idea to serial production. Find some of these products on the following pages.



Special purpose vials: VMax, iTri & nG Nano by GTG

VMax - the "large" Vase-Vial

- for optimized microsampling
- ideal for automated sample preparation
- dead volume approximately $\leq 7 \mu$ l

We can fit any vial made from tubular glass with our patented vase foot for optimised microsampling.

Minimum quantity required 1000 pcs.
We also fit your own vials with the VMax foot.

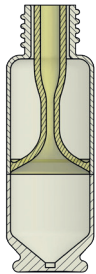


Volume	Dimensions $\varnothing \times h$	Neck / Thread \varnothing	Part number
9.5 ml	23 x 45 mm	20 mm	G006-23/045-H/VM μ G006-23/045-D/VM μ
20 ml	23 x 75 mm	20 mm	G006-23/075-H/VM μ G006-23/075-D/VM μ
3.5 ml	14 x 45 mm	13-425	G072-14/045-H/VM μ G072-14/045-D/VM μ
9.5 ml	19 x 65 mm	15-425	G072-19/065-H/VM μ G072-19/065-D/VM μ
10 ml	23 x 46 mm	20-400	G072-23/046-H/VM μ G072-23/046-D/VM μ
19 ml	27 x 57 mm	24-400	G072-27/057-H/VM μ G072-27/057-D/VM μ
39 ml	27 x 95 mm	24-400	G072-27/095-H/VM μ G072-27/095-D/VM μ
59 ml	27 x 140 mm	24-400	G072-27/140-H/VM μ G072-27/140-D/VM μ
9 ml	23 x 42 mm	HS6-19	GHS6-23/042-H/VM μ GHS6-23/042-D/VM μ
19 ml	23 x 73 mm	HS6-19	GHS6-23/073-H/VM μ GHS6-23/073-D/VM μ

iTri - High density storage vial for automated applications

High density vial for storing and handling highly volatile or extra small sample volumes securely and efficiently. Can be used in automated processes.

- high density due to tapered & fused insert
- optimized microsAMPLig
- easy labelling due to large vial body
- different vial volumes, yet identical vial dimensions
- compatible with our magnetic open-top caps
- closed-top caps available



The tapered funnel moulded into the bottle offers a large surface while having a very narrow opening. Tests showed that even while handling the open bottle, volatile samples can be retained above average. The special design allows for identical bottle dimensions while bottle volumes may vary. This makes sample handling as well as labelling or barcoding of the bottle much easier.

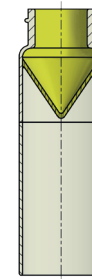
The special screw thread, an in-house development, which is also found in our headspace vials (see p. 11), allows an evaporation free storage over an extended period of time. The matching closures made from fibreglass reinforced polyamide screw on effortlessly either manually or mechanically (19 mm hex-nut). The closures are available open-top with magnetic steel ring or closed-top.

Volume	Dimensions Ø x h	Screw thread	Part number
1 ml	23 x 73 mm	HS6-19	GHS6*-iTri01-H/VMµ GHS6*-iTri01-D/VMµ
5 ml	23 x 73 mm	HS6-19	GHS6*-iTri05-H/VMµ GHS6*-iTri05-D/VMµ
8 ml	23 x 73 mm	HS6-19	GHS6*-iTri08-H/VMµ GHS6*-iTri08-D/VMµ

replace «*» with the cap colour of your choice.

replace «*» with the cap colour of your choice.						Glass	
B = blue	G = green	R = red	S = black	W = white	Y = yellow	H: clear	D: amber

nG - Nano storage vial - large body yet small volume



All advantages at a glance:

- optimized microsAMPLig
- easy labelling thanks to large vial body
- easy to handle even with bulky gloves
- different vial volumes; identical vial dimensions if required
- available with all standard closure types
- customised designs possible

Volume	Dimensions Ø x h	Screw thread	Part number
1.5 ml	14 x 40 mm	13-425	G072-14/040-H/nG015 G072-14/040-D/nG015
0.3 ml	19 x 58 mm	15-425	G072-19/058-H/nG030 G072-19/058-D/nG030
2.5 ml	19 x 58 mm	15-425	G072-19/058-H/nG250 G072-19/058-D/nG250
0.05 ml	27 x 85 mm	24-400	G072-27/085-H/nG005(09) G072-27/085-D/nG005(09)
1 ml	27 x 85 mm	24-400	G072-27/085-H/nG100 G072-27/085-D/nG100
10 ml	27 x 85 mm	24-400	G072-27/085-H/nG91000 G072-27/085-D/nG91000
0.5 ml	23 x 60 mm	HS6-19	GHS6-23/060-H/nG050 GHS6-23/060-D/nG050
5 ml	23 x 60 mm	HS6-19	GHS6-23/060-H/nG500 GHS6-23/060-D/nG500

Storage Vials from 1.0 to 60 ml with PTFE lined closed-top screw cap

Storage Vial, clear (H) or amber (D) borosilicate glass, 1. hydrolytic class, including PTFE lined closed-top screw cap.

Packed in a square sleeve box with a grid divider (100 pcs.); Sleeve box ideal for storing samples at room temperature or in the freezer.



Vials Ø 12 mm
Screw thread 9-425



Vials Ø 14 mm
Screw thread 13-425



Vials Ø 17 mm
Screw thread 15-425



Vials Ø 19 mm
Screw thread 15-425

1,0 ml	Height: 24 mm G195*-12/024-H G195*-12/024-D	Height: 19 mm G075*-14/019-H G075*-14/019-D		
1,2 ml	Height: 32 mm G195*-12/032-H/V15 μ G195*-12/032-D/V15 μ			
1,5 ml	Height: 32 mm G195*-12/032-H G195*-12/032-D	Height: 22 mm G075*-14/022-H G075*-14/022-D		
2 ml	Height: 43 mm G195*-12/043-H G195*-12/043-D	Height: 26 mm G075*-14/026-H G075*-14/026-D		
2,5 ml		Height: 30 mm G075*-14/030-H G075*-14/030-D	Height: 27 mm G075*-17/027-H G075*-17/027-D	
3,75 ml		Height: 45 mm G075*-14/045-H G075*-14/045-D	Height: 35 mm G075*-17/035-H G075*-17/035-D	
5 ml		Height: 50 mm G075*-14/050-H G075*-14/050-D	Height: 42 mm G075*-17/042-H G075*-17/042-D	Height: 37 mm G075*-19/037-H G075*-19/037-D
7,5 ml			Height: 60 mm G075*-17/060-H G075*-17/060-D	Height: 50 mm G075*-19/050-H G075*-19/050-D
10 ml			Height: 72 mm G075*-17/072-H G075*-17/072-D	Height: 65 mm G075*-19/065-H G075*-19/065-D



Vials Ø 19 mm
Screw thread 15-425



Vials Ø 23 mm
Screw thread 20-400



Vials Ø 27 mm
Screw thread 24-400

5 ml	Height: 37 mm G075*-19/037-H G075*-19/037-D		
7,5 ml	Height: 50 mm G075*-19/050-H G075*-19/050-D	Height: 37 mm G075*-23/037-H G075*-23/037-D	
10 ml	Height: 65 mm G075*-19/065-H G075*-19/065-D	Height: 45 mm G075*-23/045-H G075*-23/045-D	Height: 37 mm G075*-27/037-H G075*-27/037-D
15 ml	Height: 87 mm G075*-19/087-H G075*-19/087-D	Height: 60 mm G075*-23/060-H G075*-23/060-D	Height: 47 mm G075*-27/047-H G075*-27/047-D
20 ml		Height: 75 mm G075*-23/075-H G075*-23/075-D	Height: 57 mm G075*-27/057-H G075*-27/057-D
25 ml		Height: 85 mm G075*-23/085-H G075*-23/085-D	Height: 68 mm G075*-27/068-H G075*-27/068-D
30 ml			Height: 78 mm G075*-27/078-H G075*-27/078-D
40 ml			Height: 95 mm G075*-27/095-H G075*-27/095-D
50 ml			Height: 118 mm G075*-27/118-H G075*-27/118-D
60 ml			Height: 140 mm G075*-27/140-H G075*-27/140-D G055*-27/140-H round bottom vial

Standard sizes may also be purchased unassembled and in much simpler packaging at a favourable price.

Ask our team for [blueLine Storage Vials](#).

All Storage Vials are available with open-top caps lined with various septum types, too. Ask our team or your dealer for [Septum Vials](#) or consult www.infochroma.ch.

replace «*» with the cap colour of your choice.

B = blue	G = green	R = red	S = black	W = white	Y = yellow	Glass H: clear D: amber
----------	-----------	---------	-----------	-----------	------------	--------------------------------------

Storage Vials for the long-term storage of volatile samples

Storage Vial, clear (H) or amber (D) borosilicate glass, 1. hydrolytic class, rounded base or VMax foot. (see p. 15).

Including closed-top high density screw cap lined with PTFE or butyl-rubber/PTFE septum.



Volume	Description	Part number
10 ml	Screw vial, borosilicate glass 1. hydrolytic class • assembled with PTFE lined, closed-top, high density screw cap	GH85*-23/043-H GH85*-23/043-D
10 ml	Screw vial, borosilicate glass 1. hydrolytic class • assembled with closed-top, high density screw cap and butyl rubber/PTFE septum	GH85*-23/043-BZFZ31-H GH85*-23/043-BZFZ31-D GH85*-23/043-BZFZ31-H/G
20 ml	Screw vial, borosilicate glass 1. hydrolytic class • assembled with PTFE lined, closed-top, high density screw cap	GH85*-23/073-H GH85*-23/073-D GH85*-23/073-H/G
20 ml	Screw vial, borosilicate glass 1. hydrolytic class • assembled with closed-top, high density screw cap and butyl rubber/PTFE septum	GH85*-23/073-BZFZ31-H GH85*-23/073-BZFZ31-D GH85*-23/073-BZFZ31-H/G
9 ml	VMax screw vial for optimized microsampling, borosilicate glass 1. hydrolytic class • assembled with PTFE lined, closed-top, high density screw cap	GH85*-23/042-H/VM μ GH85*-23/042-D/VM μ
19 ml	VMax screw vial for optimized microsampling, borosilicate glass 1. hydrolytic class • assembled with PTFE lined, closed-top, high density screw cap	GH85*-23/072-H/VM μ GH85*-23/072-D/VM μ
1 ml	i-Tri screw vial, high density, tapered and fused insert (s.p.16), borosilicate glass 1. hydrolytic class • assembled with PTFE lined, closed-top, high density screw cap	GH85*-iTri01-H/VM μ GH85*-iTri01-D/VM μ
5 ml	i-Tri screw vial, high density, tapered and fused insert (s.p.16), borosilicate glass 1. hydrolytic class • assembled with PTFE lined, closed-top, high density screw cap	GH85*-iTri05-H/VM μ GH85*-iTri05-D/VM μ
8 ml	i-Tri screw vial, high density, tapered and fused insert (s.p.16), borosilicate glass 1. hydrolytic class • assembled with PTFE lined, closed-top, high density screw cap	GH85*-iTri08-H/VM μ GH85*-iTri08-D/VM μ

replace «*» with the cap colour of your choice.

B = blue	G = green	R = red	S = black	W = white	Y = yellow
----------	-----------	---------	-----------	-----------	------------

Glass
H: clear
G: graduated
D: amber

Bottles for sample storage from 6 - 2500 ml

Type III Soda lime glass: chemically inert and recyclable. The surface of the glass is smooth and non-porous so that this glass is easy to clean.

Clear glass: for good visibility of the sample and sample integrity

Amber glass or cobalt blue glass: protects the content from UV light and is ideal for light sensitive samples



Volumes	Description	Material	Part number
30 ml, 60 ml, 120 ml, 240 ml, 480 ml, 960 ml, 1000 ml	Narrow Mouth bottle "Bosten Round"	clear glass (H), amber glass (D)	8080-BR-[volume]-H 8080-BR-[volume]-D
30 ml, 60 ml, 120 ml	Narrow Mouth bottle "Bosten Round"	cobalt blue glass (B),	8075*-BR-[volume]-B
30 ml, 60 ml, 120 ml, 250 ml, 360 ml, 500 ml	Narrow Mouth bottle "Bosten Round"	blue PET (B/PET)	8080-BR-[volume]-B/PET
120 ml, 240 ml, 480 ml, 960 ml, 1920 ml	"Wide Mouth" bottle	clear glass (H)	8080-WM-[volume]-H
6 ml, 8 ml, 15 ml, 30 ml, 60 ml, 120 ml, 250 ml, 300 ml, 500 ml, 950 ml, 1250 ml, 2500 ml	"Wide Mouth" bottle	amber glass (D)	8080-WM-[volume]-D
30 ml, 60 ml, 120 ml, 180 ml, 240 ml, 480 ml, 960 ml	Straight Sided bottle without shoulder and extra large opening	clear glass (H), amber glass (D)	8080-SR-[volume]-H 8080-SR-[volume]-D
30 ml, 60 ml, 120 ml, 240 ml, 480 ml	Wide Mouth bottle with graduation	clear glass (H)	8080-MM-[volume]-H
15 ml, 30 ml, 60 ml, 12 ml, 240 ml, 480 ml, 960 ml	Square bottle "French Square"	clear glass (H)	8080-FS-[volume]-H

Pyrex® "Heavy Duty" glassware

Extra sturdy glassware

- high mechanical stability
- reinforced rim/spout for a long life
- uniform wall thickness distribution guarantees good thermal stability
- autoclavable/sterilisable
- Pyrex® borosilicate glass
- easy to read graduation and big labelling field
- batch code for good traceability
- available in pack size or individually (except test tubes)



Beakers, low and tall form

Griffin beaker, low form

- complies with ISO 3819
- thicker walls and heavier bases
- reinforced, flat bottom for good heat transfer

Volume	Diameter Ø	Height	Part number
150 ml	57 mm	89 mm	8BGN-150-057/089
250 ml	68 mm	90 mm	8BGN-150-068/090
400 ml	77 mm	110 mm	8BGN-150-077/110
600 ml	90 mm	124 mm	8BGN-150-090/124
1000 ml	108 mm	156 mm	8BGN-150-108/156
2000 ml	131 mm	179 mm	8BGN-150-131/179
3000 ml	160 mm	230 mm	8BGN-150-160/230
4000 ml	170 mm	250 mm	8BGN-150-170/250
5000 ml	180 mm	300 mm	8BGN-150-180/300

Berzelius beaker, tall form

- thicker walls and heavier bases
- reinforced, flat bottom for good heat transfer

Volume	Diameter Ø	Height	Part number
150 ml	54 mm	95 mm	8BGH-150-054/095
250 ml	60 mm	120 mm	8BGH-250-060/120
600 ml	80 mm	150 mm	8BGH-600-080/150

Measuring cylinders, squat and tall form

Measuring cylinders, squat form, class B calibrated

- complies with ISO 4788
- robust hexagonal foot

Volume	Graduation	Height	Part number
10 ml	1.0 ml	100 mm	8MZN-0010-100
25 ml	1.0 ml	125 mm	8MZN-0025-125
50 ml	1.0 ml	150 mm	8MZN-0050-150
100 ml	2.0 ml	170 mm	8MZN-0100-170
250 ml	5.0 ml	230 mm	8MZN-0250-230
500 ml	10.0 ml	255 mm	8MZN-0500-255
1000 ml	20.0 ml	295 mm	8MZN-1000-295

Measuring cylinders, tall form, class B calibrated

- complies with ISO 4788
- robust hexagonal foot

Volume	Graduation	Height	Part number
50 ml	1.0 ml	100 mm	8MZH-0050-100
100 ml	1.0 ml	125 mm	8MZH-0100-125
250 ml	2.0 ml	150 mm	8MZH-0250-150
500 ml	5.0 ml	170 mm	8MZH-0500-170
1000 ml	10.0 ml	230 mm	8MZH-1000-230
2000 ml	20.0 ml	255 mm	8MZH-2000-255

Flasks, wide or narrow neck



Flask with wide neck



Flask with narrow neck

Flasks with wide neck

Volume	Body / Neck Ø	Height	Part number
125 ml	66 / 27 mm	109 mm	8EWM-0125-109
250 ml	78 / 33 mm	133 mm	8EWM-0250-133
500 ml	97 / 43 mm	174 mm	8EWM-0500-174
1000 ml	122 / 52 mm	220 mm	8EWM-1000-220
2000 ml	157 / 63 mm	282 mm	8EWM-2000-282

Flasks with narrow neck

Volume	Body / Neck Ø	Height	Part number
10 ml	31 / 10 mm	50 mm	8ENM-0010-050
25 ml	41 / 13 mm	65 mm	8ENM-0025-065
50 ml	51 / 14 mm	78 mm	8ENM-0050-078
125 ml	67 / 23 mm	114 mm	8ENM-0125-114
250 ml	82 / 27 mm	132 mm	8ENM-0250-132
500 ml	101 / 31 mm	176 mm	8ENM-0500-176
1000 ml	129 / 37 mm	216 mm	8ENM-1000-216
2000 ml	160 / 43 mm	268 mm	8ENM-2000-268
4000 ml	206 / 43 mm	360 mm	8ENM-4000-360
6000 ml	235 / 43 mm	410 mm	8ENM-6000-410

Test tubes with or without rim



Test tubes with rim



Test tubes without rim

Test tubes with rim

- complies with ISO 4142

Volume	Diameter Ø	Height	Part number
3 ml	10 mm	75 mm	8RMR-03-10/075
5 ml	12 mm	75 mm	8RMR-05-12/075
15 ml	16 mm	125 mm	8RMR-15-16/125
18 ml	16 mm	150 mm	8RMR-18-16/150
24 ml	18 mm	150 mm	8RMR-24-18/150
45 ml	24 mm	150 mm	8RMR-45-24/150

Test tubes without rim

- complies with ISO 4142

Volume	Diameter Ø	Height	Part number
3 ml	10 mm	75 mm	8ROR-03-10/075
5 ml	12 mm	75 mm	8ROR-05-12/075
6 ml	12 mm	100 mm	8ROR-06-12/100
15 ml	16 mm	125 mm	8ROR-15-16/125
18 ml	16 mm	150 mm	8ROR-18-16/150
24 ml	18 mm	150 mm	8ROR-24-18/150
45 ml	24 mm	150 mm	8ROR-45-24/150

"YETI" Syringe filters

With Luer Lock, membrane & pore size imprinted on filter housing for easy identification.

Filter diameter / approximate filtration volume

33 mm ≤ 200 ml sample volume
 25 mm ≤ 100 ml sample volume
 13 mm ≤ 10 ml sample volume
 4 mm ≤ 2 ml sample volume

Pore sizes

0,1 - 10 µm



Membrane	Description
Nylon (N)	stable hydrophilic membrane, fast wetting, very high mechanical stability, wide application area as wide compatibility with aqueous and organic solvents, compatible with alkaline but not with strong acidic solvents
Polyethersulfon (PES)	hydrophilic, high flow rates, low protein binding, low concentration of extractable substances
Polypropylen (PP)	hydrophobic, wide chemical compatibility even with aggressive solvents, low concentration of extractable substances, Gamma sterilisable
PTFE (P)	strongly hydrophobic, chemically inert to most organic solvents, alkalis and acids, if used with aqueous solvents pre-wetting of the membrane is required (eg. alcohol)
PTFE hydrophilic (P/Hy)	as above but may be used with aqueous solvents without pre-wetting of the membrane (0.2 µm and 0.45 µm pore sizes only)
Polyvinylidene fluoride (PVDF)	hydrophilic, broad chemical resistance, low protein binding, low concentration of extractable substances
Regenerated cellulose (RC)	hydrophilic, good solvent resistance, low unspecific protein adsorption, high mechanical stability, pH-compatible in the range 3-12
Mixed-cellulose-ester (MCE)	hydrophilic, allows high flow rates, high particle absorption capacity, high protein binding therefore suited for microbiological monitoring and diagnostic-kits

Polypropylene syringes

HPLC filter syringes made of inert, chemical-resistant polypropylene (PP), with smudge-proof scale and transparent barrel.
 May not be used in human medicine.

With Luer Slip or Luer Lock

Luer slip - standard conical fitting, eccentric
 Centred (Z) - standard conical fitting, centred
 Luer Lock (LL) - twist-and-lock mechanism to create a secure fitting connection

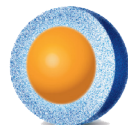


Volume	Description	Part number
1 ml	Luer Slip, eccentric	G899-PP01
3 ml	Luer Slip, eccentric Luer Lock	G899-PP03 G899-PP03/LL
5ml	Luer Slip, eccentric Luer Slip, centered Luer Lock	G899-PP05 G899-PP05/Z G899-PP05/LL
10 ml	Luer Slip, eccentric Luer Slip, centered Luer Lock	G899-PP10 G899-PP10/Z G899-PP10/LL
20 ml	Luer Slip, eccentric Luer Lock	G899-PP20 G899-PP20/LL
30 ml	Luer Slip, eccentric Luer Lock	G899-PP30 G899-PP30/LL
50 ml	Luer Slip, eccentric Luer Lock	G899-PP50 G899-PP50/LL

HALO® Fused-Core columns

HALO® Fused-Core columns for UHPLC at „regular“ pressure

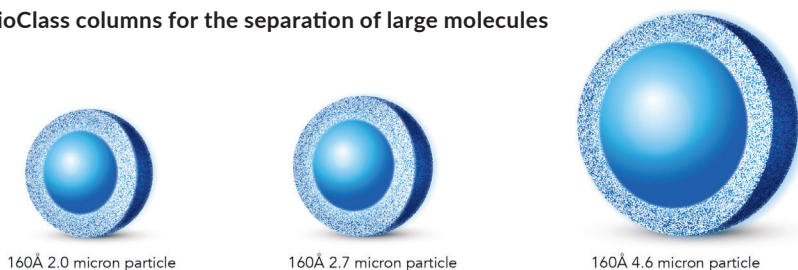
The Fused-Core particle technology fuses a porous shell to a solid core particle. The shorter diffusion path of the HALO® particles reduces axial dispersion of solutes and minimises peak broadening. This, compared to a totally porous particle, allows for faster flow rates. Because of the increased separation power of the HALO® column, it can either be used for faster analysis or an improved separation.



HALO® UHPLC columns for the separation of small molecules

Column type	Description / Applications
HALO® 2 µm - 90 Å	Highest UHPLC performance possible without the disadvantages of sub-2 µm columns.
HALO® 2.7 µm - 90 Å	Reliable, efficient performance with lower back pressure compared to all sub-2 µm columns.
HALO® 5 µm - 90 Å	Performance of 3 µm non-core column at 5 µm column pressures.

HALO® BioClass columns for the separation of large molecules



Column	Description/Applications
HALO® BioClass Protein	For the perfect large molecule solution, the HALO® BioClass columns are available with 400 Å and 1000 Å.
HALO® BioClass Peptide	Ideal for both ultra-fast and ultra-high resolution separations of peptides and polypeptides up to 20 kDa
HALO® BioClass Glycan	Ideal for hydrophilic interaction liquid chromatography (HILIC) separations of oligosaccharides, and particularly, of released and labelled glycans from glycoproteins and proteoglycans.

For more information on HALO columns consult our website www.infochroma.ch or contact info@infochroma.ch to request the HALO catalogue.

ColStor - Storage system for HPLC or GC columns

Available again!

- Storage system with foam mouldings for the storage of up to 30 HPLC columns or 5 GC columns
- stackable and thus extendable (stacking accessory available as an option)
- for HPLC columns of up to 30 cm in length, may also be used for 5 cm, 12,5 cm, 15 cm and 25 cm columns
- robust and solid housing, 100% steel, chrome drawer handle



Protect your HPLC or GC columns from loss or damage with this practical and compact storage system. The drawers of the storage box are lined with moulded foam. The moulds are designed to store all common analytical and semi-prep columns. Several storage boxes may be combined to a larger system.

Description	Part number
Storage system for 30 HPLC columns	8LH-ColStor30
Storage system for 5 GC columns	8LH-ColStor05

Deuterium detector lamps

Deuterium detector lamps supply an almost continuous light spectrum ranging from the UV wavelength range (185 - 400 nm) to the visible region (400-800 nm). They are mainly used as an ultraviolet light source for analysis purposes such as UV-VIS spectroscopy or high performance liquid chromatography (HPLC).



Description	HP/Agilent	Part Number
Deuterium lamp for 1100/1200 DAD/MWD	2140-0590, LabHhut HP-404	8720-2140-0590ASP
Deuterium lamp (D2) long-life	Agilent 1100, 1200, 1260 DAD	8720-DL-AGI-105LL
Deuterium lamp (D2) for spectrophotometer (1000h)	HP/Agilent 8453 and 8454 equivalent to: 2140-0605	8720-AAL21-2854
Durantium L2 deuterium lamp (D2) (2000h)	HP/Agilent 8453 equivalent to: 2140-0605	8720-AAL31-2854

Migration cells

Testing of food packaging following EU regulations

Packaging with direct food contact has to comply with EU regulations*. Switzerland adopted these regulations in the LGV. With the modular Sieg-Mi-Flex migration cells all kinds of samples may be tested in compliance with these regulations.

Properties of the migration cells System-Siegwerk (Sieg-Mi-Flex)

- the one sided contact without cutting edges may be set up for the simulation of migration from food contact materials
- may be used with liquid and solid food simulants
- available in stainless steel or borosilicate glass (PVDF on request)
- migration cell materials may be combined
- for the testing of different sizes of specimen surfaces, centre rings and reduction plates with defined surface/ volume ratios are available
- all centre rings and reduction plates (stainless steel) are compatible with the ground plates



Migration cell, stainless steel

- temperature resistance: -15 °C - 180 °C
- pressure seal up to 9 bar
- most commonly used migration cell

Migration cell, borosilicate glass:

- temperature resistance: -15 °C - 130 °C
- pressure seal up to 1 bar
- high chemical resistance

Both migration cell types may be fitted with 1 or 2 packing specimen:

- fitted with 1 packing specimen (horizontal storage)
- fitted with 2 packing specimen (vertical storage)

**EU-regulations: 1935/2004 and 10/2011 (PIM) with amendment 1416/2016 to regulation 10/2011, as well as BfR-recommendations LGV: Swiss Regulation on food and commodities dated 16. December 2016*

Salli saddle chair

Sit healthy and in a natural posture with the Salli saddle chair - for laboratory and office use

Haven't we all experienced pain in the back, shoulders and neck after a long day in the office sitting on a classic office chair.

The ergonomically shaped Salli saddle chair guides the body into a natural, healthy sitting posture and improves well being and productivity.

On the Salli saddle chair, the body weight is carried by the ischial tuberosities and the lower back forms a natural S-curve, similar to sitting on a riding saddle. This allows for a good posture of the back without unnecessary tensions. Because of the reduced physical load on the spine, the muscles in the shoulder and neck area can relax.



- upper and lower part of the body can move freely
- the good posture allows the rib cage to expand freely, the breathing deepens
- the blood circulation improves
- on the active seat, the muscles in the back and abdomen get a small workout



Salli type	Description
Salli SwingFit	two-part active seat with width adjustment
Salli MultiAdjuster	two-part seat with width and inclination adjustment
Salli Stainless	two-part active seat with inclination adjustment, all metal parts stainless steel
Salli Strong	two-part active seat with inclination adjustment, especially robust
Salli Swing	two-part active seat; fixed width
Salli Twin	two-part active seat with inclination adjustment
Salli Slim SwingFit	two-part active seat with width adjustment for children or petite women

Our partners worldwide

Algeria

We Conso / We Service
weconso.info@gmail.com
weservice.info@gmail.com

Austria

Merz Brothers GmbH
office@merzbrothers.at
www.merzbrothers.at

Belgium

Achrom
achrom@achrom.be
www.achrom.be

Canada

Canadian Life Science
info@lifescience.ca
www.lifescience.ca

China

ABCAM
www.abcam.com

Croatia

Vita Lab Nova d.o.o.
vedran.caktas@vitalab.hr
www.vitalab.hr

Czech Republic

TRIGON PLUS spol. s r.o.
musli@trigon-plus.cz
www.trigon-plus.cz

Denmark

Laboratory, Automation &
Technologies A/S
info@lat-int.dk
www.lat-int.dk

Estonia

KRK Labor
krk.labor@hot.ee

Finland

Tampereen Penli OY
penli@co.inet.fi

France

ACTION EUROPE SASU
info@actioneurope.fr
www.actioneurope.fr
www.sertir.fr

Germany

Klaus Ziemer GmbH
info@az-analyt.eu
www.az-analyt.eu

Chromatographie Handel
Müller
www.c-h-m.de

DURATEC

Analysentechnik GmbH
info@duratec.de
www.duratec.info

LABC-Labortechnik
Zillger GbR
info@LABC.de
www.LABC.de

United Kingdom

Greyhound Chromatogra-
phy and Allied Chemicals
sales@greyhoundchrom.com
www.greyhoundchrom.com

Greece

Petros Agapiou Makridis C.O.
mole_mak@otenet.gr

Ireland

Elementec Ltd
accounts@elementec.ie
www.elementec.ie

Italy

Microcolumn srl
info@microcolumn.it
www.microcolumn.it

Japan

Osaka Chemical Co. Ltd.
info@daichem.co.jp
www.daichem.co.jp

Latvia

DBF Baltic Ltd
DBF_Baltic@inbox.lv

Lithuania

UAB Labochema LT
tadas.joskaudas@labochema.lt

Netherlands

SD Screening Devices b.v.
info@screeningdevices.com
www.screeningdevices.com

Pakistan

Integrated Biosciences
integratedbiosciences@
hotmail.com

Romania

SC EMSAR SRL
office@emsar.ro
www.emsar.ro

Russia

OOO Chromsteklo
chromsteklo@mail.ru
www.chromsteklo.com

Serbia

Cluster d.o.o.
blagoje.velickovic@cluster.co.rs
www.cluster.co.rs

Singapore

Scientific Procurement (S)
Pte Ltd
info@sps-sg.com
www.scientificprocurement.com

South Korea

ML Scientific Co. Ltd
info@mlscience.co.kr
www.mlscience.co.kr

Spain

Cromlab S. L.
comercial@cromlab.es
www.cromlab.es

Sweden

Scantec Nordic AB
info@scantecnordic.se
www.scantecnordic.se

Thailand

Sithiporn Associates Co. Ltd.
center@sithiphorn.com
www.sithiphorn.com

United Arab Emirates

Al Waleed Trading Co.
L.L.C.
alwatco@eim.ae

